

State Historical Soc.

THE WEEKLY ARENA

Volume 4, Number 22.

ALMONT, MORTON COUNTY, NORTH DAKOTA, MAY 22, 1914.

Price, Per Year \$1.25

WORK ON COAST LINE

Another Active Season of Railroad Building is in View.

For the past three years North Dakota has been one of the first states of the United States in the matter of new railroad mileage built. Indications this year point to another active season of railroad construction. Prominent railroad officials predict that the competition between the different railroad companies for both state and international business will result in the pushing of much work already suspended in the state.

Already cars of horses and equipment have gone forward on the Soo, and work on the new extension west of Plaza is being started. The Soo will build this year across the reservation, and into Montana.

An immense bridge will span the Missouri and once this important engineering feat in completed the construction work, westward, will move very rapidly.

CARD OF THANKS

We take this means of extending our hearty thanks to our many friends for the help, rendered our Mother during her illness and for the many kind words spoken, the many helping hands extended and the sympathy shown in our hour of sorrow.

Mrs. John Nordquist,
Miss Anna Thompson,
Mr. Tennis Thompson.

Oliver Wood was in town last Friday and paid his subscription.

Miss Blanche Kelsven is visiting her brother, Mr. and Mrs. Kelsven in Almont. Miss Kelsven has been teaching school at Crookston, Minnesota and also at Jamestown, North Dakota the past year.

PRESIDENTS OF THREE RAILROADS WILL MEET AT GRAND FORKS

On May 26th, at Which Time a Special and Unique Feature will be Produced by the University Club

"A PAGEANT OF THE NORTHWEST"

Is the Play in Question Which Will be Witnessed by Many People at the Convention

With the gathering of the presidents of three great railroads of the northwest and the presentation of a historical pageant by the University of North Dakota, special interest is centering on the great convention of the Mississippi Valley Historical Association to be held in Grand Forks, May 26 to 28th, inclusive. The association has over one thousand members and a grand number have signified their intention of being present. President Pennington of the Soo, President Louis Hill of the Great Northern and President Hannaford of the Northern Pacific have all been invited to the convention.

The program for the three days session promises interesting and scholarly presentations of historical subjects of special interest to the northwest. The social feature of the convention will be a monster banquet to be held on the evening of May 27th. The arrangements for the convention are being made by local committees and a state committee headed by Governor Hanna.

A special and unique feature will be the production of "A Pageant of the Northwest" by the Bock and Buskin dramatic club of the University. The pageant is an entirely original production, each episode being written by different committees of the University organization. The Pageant consists of four episodes treating in a dramatic way the early history of the northwest. The scene of the first episode is in England, the second shows the tragedy of the wilderness; the third treats the spirit of adventure and the westward movement, while the last and most dramatic portrays the Lewis and Clark expedition and represents the Anglo-Saxon conquest of the continent. The production will be staged at the huge outdoor theatre, which is now under construction at the University.

HEART RIVER RIPPLES

Ermine Laurzon visited at Rose Dale, Sunday.

John Thompson was seen in the ripples, Sunday.

Wm. Kennedy called on August Johnson, Sunday.

Mrs. B. Ralph entertained the Christianson family for Sunday dinner.

Mr. and Mrs. C. E. Johnson were the guests of Mr. and Mrs. O. Lein, Sunday.

Charles Pathmann from Carson autored to Rose Dale Farm and back Saturday afternoon.

Ida Johnson attended the dance at Carson, Saturday, and spent a couple of days at the Pathmann home.

Toonetta Johnson returned home last week, after spending the winter with friends and relatives in Minnesota.

The Almont Areas appreciates the support its readers are given it in the line of news. By giving us news you not only help the paper, but you help build up the town of Almont.

SISTER STATE DROPS BEHIND

North Dakota Leads South Dakota in Population by 25,000.

For the first time in history, North Dakota leads South Dakota in point of population. The report of the census department for the past five years just received, shows that North Dakota now has a population of 586,966 as against 561,583. This gain is remarkable in view of the fact that in 1900 South Dakota was approximately 100,000 in the lead. By 1910 North Dakota was within 5,000 of the state to the south, and now we lead by 25,000. The figures are especially significant as showing that the state is continuing its remarkable increase in the way of population that was so prominently shown by the last census report.

North Dakota cities also show a substantial growth as far as reported.

The "Dainty" Brand
GROCERIES
ARE THE BEST
Call for them at our store. Also look over the goods on our BARGAIN COUNTER where you will always get a lot for your money.
O. C. ELINGSON

We Can Supply Your Wants
In Farm Implements, Harness and Collars, Hardware, Cook Stoves DeLaval Cream Separators, Washing Machines, Pumps, Oils, Garden Tools, Pumps and Piping, Bolts and Nails.
Nelson--Templeton Implement Co.

We Can Fill Your Bill
For anything in the lumber line--We have it--we sell it and at right prices. Give us a chance to figure on your bill. We stand ready to meet any competitor on our line.
Let Us Show You
Highest market price paid for grain at all times.
LUMBER AND GRAIN BUILDERS HARDWARE and WIRE
The Old Reliable
C. H. CHAS LBR. CO.
ALMONT, NORTH DAKOTA

.. SIMS ..

Miss Anna Jacobson made a trip to Almont last Saturday evening.

Operator J. P. Whistler made a business trip to Mandan, last Saturday.

Operators Shaffner and Whistler made an overland trip to Almont, last Monday.

Mrs. J. F. Stauffer did some shopping at Mandan the latter part of last week.

Miss Hilma Cus spent Saturday and Sunday under her parental roof at Mandan.

Barb wire and political fences are undergoing a thorough overhauling these days.

P. H. Hoovevelt and family have moved into town and are located in the old Evans house.

The wagon bridge, close to where the Brick Yard Boarding House used to stand, is being rebuilt.

Operator J. P. Shaffner has bought a horse and harness. All that is lacking now is a buggy.

A deal was consummated last week whereby John Jacobson purchased seven head of cattle from R. Bakken.

Attorney Levenson and Cashier Kellogg were in town from New Salem, last Friday, the former probably in the interests of his candidacy for Clerk of Court.

Latest reports from Miss Agnes Hoeger, who went to the Glendive

hospital for treatment some time ago, is that she is getting along very nicely and will probably be back in a few days.

Mrs. J. Ima, accompanied by her son, Hildreth, made a business trip to Driscoll, N. D., last Saturday. She intends spending a day or two at Mandan on her return home and will probably reach Sims again by Wednesday or Thursday.

About the first thing that caught our eye last Sunday morning was the tri-colored flag of Norway, flying at full mast, over the residence of P. Hadriz, Sr. We were at once brought to the realization that it was the 17th of May, Norway's Independence day.

Just as we were writing these items we learned that the doctor had been called to Oscar Olin's place on account of their seven-year-old boy, Melvin, being sick. We have been unable to learn the nature of the disease, but his fever was 104 degrees before the doctor was called.

Filing Homes to Reliance. Buy your horse according to your means.

Large employers of labor in small or communities where it can be done conveniently are quite generally urging their workmen to buy and not rent homes. In one such plan no workman is permitted to buy a house until the company's plan which will cost over \$5000 at the monthly rate of \$100. The company holds a house for \$1000. It sells this to an employee upon payment of the first \$1000 in 12 months, or as the employee may prefer, in 24 months, or as the employee may prefer, in 36 months, or as the employee may prefer, in 48 months, or as the employee may prefer, in 60 months, or as the employee may prefer, in 72 months, or as the employee may prefer, in 84 months, or as the employee may prefer, in 96 months, or as the employee may prefer, in 108 months, or as the employee may prefer, in 120 months, or as the employee may prefer, in 132 months, or as the employee may prefer, in 144 months, or as the employee may prefer, in 156 months, or as the employee may prefer, in 168 months, or as the employee may prefer, in 180 months, or as the employee may prefer, in 192 months, or as the employee may prefer, in 210 months, or as the employee may prefer, in 228 months, or as the employee may prefer, in 240 months, or as the employee may prefer, in 252 months, or as the employee may prefer, in 264 months, or as the employee may prefer, in 276 months, or as the employee may prefer, in 288 months, or as the employee may prefer, in 300 months, or as the employee may prefer, in 312 months, or as the employee may prefer, in 324 months, or as the employee may prefer, in 336 months, or as the employee may prefer, in 348 months, or as the employee may prefer, in 360 months, or as the employee may prefer, in 372 months, or as the employee may prefer, in 384 months, or as the employee may prefer, in 396 months, or as the employee may prefer, in 408 months, or as the employee may prefer, in 420 months, or as the employee may prefer, in 432 months, or as the employee may prefer, in 444 months, or as the employee may prefer, in 456 months, or as the employee may prefer, in 468 months, or as the employee may prefer, in 480 months, or as the employee may prefer, in 492 months, or as the employee may prefer, in 504 months, or as the employee may prefer, in 516 months, or as the employee may prefer, in 528 months, or as the employee may prefer, in 540 months, or as the employee may prefer, in 552 months, or as the employee may prefer, in 564 months, or as the employee may prefer, in 576 months, or as the employee may prefer, in 588 months, or as the employee may prefer, in 600 months, or as the employee may prefer, in 612 months, or as the employee may prefer, in 624 months, or as the employee may prefer, in 636 months, or as the employee may prefer, in 648 months, or as the employee may prefer, in 660 months, or as the employee may prefer, in 672 months, or as the employee may prefer, in 684 months, or as the employee may prefer, in 696 months, or as the employee may prefer, in 708 months, or as the employee may prefer, in 720 months, or as the employee may prefer, in 732 months, or as the employee may prefer, in 744 months, or as the employee may prefer, in 756 months, or as the employee may prefer, in 768 months, or as the employee may prefer, in 780 months, or as the employee may prefer, in 792 months, or as the employee may prefer, in 804 months, or as the employee may prefer, in 816 months, or as the employee may prefer, in 828 months, or as the employee may prefer, in 840 months, or as the employee may prefer, in 852 months, or as the employee may prefer, in 864 months, or as the employee may prefer, in 876 months, or as the employee may prefer, in 888 months, or as the employee may prefer, in 900 months, or as the employee may prefer, in 912 months, or as the employee may prefer, in 924 months, or as the employee may prefer, in 936 months, or as the employee may prefer, in 948 months, or as the employee may prefer, in 960 months, or as the employee may prefer, in 972 months, or as the employee may prefer, in 984 months, or as the employee may prefer, in 996 months, or as the employee may prefer, in 1008 months, or as the employee may prefer, in 1020 months, or as the employee may prefer, in 1032 months, or as the employee may prefer, in 1044 months, or as the employee may prefer, in 1056 months, or as the employee may prefer, in 1068 months, or as the employee may prefer, in 1080 months, or as the employee may prefer, in 1092 months, or as the employee may prefer, in 1104 months, or as the employee may prefer, in 1116 months, or as the employee may prefer, in 1128 months, or as the employee may prefer, in 1140 months, or as the employee may prefer, in 1152 months, or as the employee may prefer, in 1164 months, or as the employee may prefer, in 1176 months, or as the employee may prefer, in 1188 months, or as the employee may prefer, in 1200 months, or as the employee may prefer, in 1212 months, or as the employee may prefer, in 1224 months, or as the employee may prefer, in 1236 months, or as the employee may prefer, in 1248 months, or as the employee may prefer, in 1260 months, or as the employee may prefer, in 1272 months, or as the employee may prefer, in 1284 months, or as the employee may prefer, in 1296 months, or as the employee may prefer, in 1308 months, or as the employee may prefer, in 1320 months, or as the employee may prefer, in 1332 months, or as the employee may prefer, in 1344 months, or as the employee may prefer, in 1356 months, or as the employee may prefer, in 1368 months, or as the employee may prefer, in 1380 months, or as the employee may prefer, in 1392 months, or as the employee may prefer, in 1404 months, or as the employee may prefer, in 1416 months, or as the employee may prefer, in 1428 months, or as the employee may prefer, in 1440 months, or as the employee may prefer, in 1452 months, or as the employee may prefer, in 1464 months, or as the employee may prefer, in 1476 months, or as the employee may prefer, in 1488 months, or as the employee may prefer, in 1500 months, or as the employee may prefer, in 1512 months, or as the employee may prefer, in 1524 months, or as the employee may prefer, in 1536 months, or as the employee may prefer, in 1548 months, or as the employee may prefer, in 1560 months, or as the employee may prefer, in 1572 months, or as the employee may prefer, in 1584 months, or as the employee may prefer, in 1596 months, or as the employee may prefer, in 1608 months, or as the employee may prefer, in 1620 months, or as the employee may prefer, in 1632 months, or as the employee may prefer, in 1644 months, or as the employee may prefer, in 1656 months, or as the employee may prefer, in 1668 months, or as the employee may prefer, in 1680 months, or as the employee may prefer, in 1692 months, or as the employee may prefer, in 1704 months, or as the employee may prefer, in 1716 months, or as the employee may prefer, in 1728 months, or as the employee may prefer, in 1740 months, or as the employee may prefer, in 1752 months, or as the employee may prefer, in 1764 months, or as the employee may prefer, in 1776 months, or as the employee may prefer, in 1788 months, or as the employee may prefer, in 1800 months, or as the employee may prefer, in 1812 months, or as the employee may prefer, in 1824 months, or as the employee may prefer, in 1836 months, or as the employee may prefer, in 1848 months, or as the employee may prefer, in 1860 months, or as the employee may prefer, in 1872 months, or as the employee may prefer, in 1884 months, or as the employee may prefer, in 1896 months, or as the employee may prefer, in 1908 months, or as the employee may prefer, in 1920 months, or as the employee may prefer, in 1932 months, or as the employee may prefer, in 1944 months, or as the employee may prefer, in 1956 months, or as the employee may prefer, in 1968 months, or as the employee may prefer, in 1980 months, or as the employee may prefer, in 1992 months, or as the employee may prefer, in 2004 months, or as the employee may prefer, in 2016 months, or as the employee may prefer, in 2028 months, or as the employee may prefer, in 2040 months, or as the employee may prefer, in 2052 months, or as the employee may prefer, in 2064 months, or as the employee may prefer, in 2076 months, or as the employee may prefer, in 2088 months, or as the employee may prefer, in 2100 months, or as the employee may prefer, in 2112 months, or as the employee may prefer, in 2124 months, or as the employee may prefer, in 2136 months, or as the employee may prefer, in 2148 months, or as the employee may prefer, in 2160 months, or as the employee may prefer, in 2172 months, or as the employee may prefer, in 2184 months, or as the employee may prefer, in 2196 months, or as the employee may prefer, in 2208 months, or as the employee may prefer, in 2220 months, or as the employee may prefer, in 2232 months, or as the employee may prefer, in 2244 months, or as the employee may prefer, in 2256 months, or as the employee may prefer, in 2268 months, or as the employee may prefer, in 2280 months, or as the employee may prefer, in 2292 months, or as the employee may prefer, in 2304 months, or as the employee may prefer, in 2316 months, or as the employee may prefer, in 2328 months, or as the employee may prefer, in 2340 months, or as the employee may prefer, in 2352 months, or as the employee may prefer, in 2364 months, or as the employee may prefer, in 2376 months, or as the employee may prefer, in 2388 months, or as the employee may prefer, in 2400 months, or as the employee may prefer, in 2412 months, or as the employee may prefer, in 2424 months, or as the employee may prefer, in 2436 months, or as the employee may prefer, in 2448 months, or as the employee may prefer, in 2460 months, or as the employee may prefer, in 2472 months, or as the employee may prefer, in 2484 months, or as the employee may prefer, in 2496 months, or as the employee may prefer, in 2508 months, or as the employee may prefer, in 2520 months, or as the employee may prefer, in 2532 months, or as the employee may prefer, in 2544 months, or as the employee may prefer, in 2556 months, or as the employee may prefer, in 2568 months, or as the employee may prefer, in 2580 months, or as the employee may prefer, in 2592 months, or as the employee may prefer, in 2604 months, or as the employee may prefer, in 2616 months, or as the employee may prefer, in 2628 months, or as the employee may prefer, in 2640 months, or as the employee may prefer, in 2652 months, or as the employee may prefer, in 2664 months, or as the employee may prefer, in 2676 months, or as the employee may prefer, in 2688 months, or as the employee may prefer, in 2700 months, or as the employee may prefer, in 2712 months, or as the employee may prefer, in 2724 months, or as the employee may prefer, in 2736 months, or as the employee may prefer, in 2748 months, or as the employee may prefer, in 2760 months, or as the employee may prefer, in 2772 months, or as the employee may prefer, in 2784 months, or as the employee may prefer, in 2796 months, or as the employee may prefer, in 2808 months, or as the employee may prefer, in 2820 months, or as the employee may prefer, in 2832 months, or as the employee may prefer, in 2844 months, or as the employee may prefer, in 2856 months, or as the employee may prefer, in 2868 months, or as the employee may prefer, in 2880 months, or as the employee may prefer, in 2892 months, or as the employee may prefer, in 2904 months, or as the employee may prefer, in 2916 months, or as the employee may prefer, in 2928 months, or as the employee may prefer, in 2940 months, or as the employee may prefer, in 2952 months, or as the employee may prefer, in 2964 months, or as the employee may prefer, in 2976 months, or as the employee may prefer, in 2988 months, or as the employee may prefer, in 3000 months, or as the employee may prefer, in 3012 months, or as the employee may prefer, in 3024 months, or as the employee may prefer, in 3036 months, or as the employee may prefer, in 3048 months, or as the employee may prefer, in 3060 months, or as the employee may prefer, in 3072 months, or as the employee may prefer, in 3084 months, or as the employee may prefer, in 3096 months, or as the employee may prefer, in 3108 months, or as the employee may prefer, in 3120 months, or as the employee may prefer, in 3132 months, or as the employee may prefer, in 3144 months, or as the employee may prefer, in 3156 months, or as the employee may prefer, in 3168 months, or as the employee may prefer, in 3180 months, or as the employee may prefer, in 3192 months, or as the employee may prefer, in 3204 months, or as the employee may prefer, in 3216 months, or as the employee may prefer, in 3228 months, or as the employee may prefer, in 3240 months, or as the employee may prefer, in 3252 months, or as the employee may prefer, in 3264 months, or as the employee may prefer, in 3276 months, or as the employee may prefer, in 3288 months, or as the employee may prefer, in 3300 months, or as the employee may prefer, in 3312 months, or as the employee may prefer, in 3324 months, or as the employee may prefer, in 3336 months, or as the employee may prefer, in 3348 months, or as the employee may prefer, in 3360 months, or as the employee may prefer, in 3372 months, or as the employee may prefer, in 3384 months, or as the employee may prefer, in 3396 months, or as the employee may prefer, in 3408 months, or as the employee may prefer, in 3420 months, or as the employee may prefer, in 3432 months, or as the employee may prefer, in 3444 months, or as the employee may prefer, in 3456 months, or as the employee may prefer, in 3468 months, or as the employee may prefer, in 3480 months, or as the employee may prefer, in 3492 months, or as the employee may prefer, in 3504 months, or as the employee may prefer, in 3516 months, or as the employee may prefer, in 3528 months, or as the employee may prefer, in 3540 months, or as the employee may prefer, in 3552 months, or as the employee may prefer, in 3564 months, or as the employee may prefer, in 3576 months, or as the employee may prefer, in 3588 months, or as the employee may prefer, in 3600 months, or as the employee may prefer, in 3612 months, or as the employee may prefer, in 3624 months, or as the employee may prefer, in 3636 months, or as the employee may prefer, in 3648 months, or as the employee may prefer, in 3660 months, or as the employee may prefer, in 3672 months, or as the employee may prefer, in 3684 months, or as the employee may prefer, in 3696 months, or as the employee may prefer, in 3708 months, or as the employee may prefer, in 3720 months, or as the employee may prefer, in 3732 months, or as the employee may prefer, in 3744 months, or as the employee may prefer, in 3756 months, or as the employee may prefer, in 3768 months, or as the employee may prefer, in 3780 months, or as the employee may prefer, in 3792 months, or as the employee may prefer, in 3804 months, or as the employee may prefer, in 3816 months, or as the employee may prefer, in 3828 months, or as the employee may prefer, in 3840 months, or as the employee may prefer, in 3852 months, or as the employee may prefer, in 3864 months, or as the employee may prefer, in 3876 months, or as the employee may prefer, in 3888 months, or as the employee may prefer, in 3900 months, or as the employee may prefer, in 3912 months, or as the employee may prefer, in 3924 months, or as the employee may prefer, in 3936 months, or as the employee may prefer, in 3948 months, or as the employee may prefer, in 3960 months, or as the employee may prefer, in 3972 months, or as the employee may prefer, in 3984 months, or as the employee may prefer, in 3996 months, or as the employee may prefer, in 4008 months, or as the employee may prefer, in 4020 months, or as the employee may prefer, in 4032 months, or as the employee may prefer, in 4044 months, or as the employee may prefer, in 4056 months, or as the employee may prefer, in 4068 months, or as the employee may prefer, in 4080 months, or as the employee may prefer, in 4092 months, or as the employee may prefer, in 4104 months, or as the employee may prefer, in 4116 months, or as the employee may prefer, in 4128 months, or as the employee may prefer, in 4140 months, or as the employee may prefer, in 4152 months, or as the employee may prefer, in 4164 months, or as the employee may prefer, in 4176 months, or as the employee may prefer, in 4188 months, or as the employee may prefer, in 4200 months, or as the employee may prefer, in 4212 months, or as the employee may prefer, in 4224 months, or as the employee may prefer, in 4236 months, or as the employee may prefer, in 4248 months, or as the employee may prefer, in 4260 months, or as the employee may prefer, in 4272 months, or as the employee may prefer, in 4284 months, or as the employee may prefer, in 4296 months, or as the employee may prefer, in 4308 months, or as the employee may prefer, in 4320 months, or as the employee may prefer, in 4332 months, or as the employee may prefer, in 4344 months, or as the employee may prefer, in 4356 months, or as the employee may prefer, in 4368 months, or as the employee may prefer, in 4380 months, or as the employee may prefer, in 4392 months, or as the employee may prefer, in 4404 months, or as the employee may prefer, in 4416 months, or as the employee may prefer, in 4428 months, or as the employee may prefer, in 4440 months, or as the employee may prefer, in 4452 months, or as the employee may prefer, in 4464 months, or as the employee may prefer, in 4476 months, or as the employee may prefer, in 4488 months, or as the employee may prefer, in 4500 months, or as the employee may prefer, in 4512 months, or as the employee may prefer, in 4524 months, or as the employee may prefer, in 4536 months, or as the employee may prefer, in 4548 months, or as the employee may prefer, in 4560 months, or as the employee may prefer, in 4572 months, or as the employee may prefer, in 4584 months, or as the employee may prefer, in 4596 months, or as the employee may prefer, in 4608 months, or as the employee may prefer, in 4620 months, or as the employee may prefer, in 4632 months, or as the employee may prefer, in 4644 months, or as the employee may prefer, in 4656 months, or as the employee may prefer, in 4668 months, or as the employee may prefer, in 4680 months, or as the employee may prefer, in 4692 months, or as the employee may prefer, in 4704 months, or as the employee may prefer, in 4716 months, or as the employee may prefer, in 4728 months, or as the employee may prefer, in 4740 months, or as the employee may prefer, in 4752 months, or as the employee may prefer, in 4764 months, or as the employee may prefer, in 4776 months, or as the employee may prefer, in 4788 months, or as the employee may prefer, in 4800 months, or as the employee may prefer, in 4812 months, or as the employee may prefer, in 4824 months, or as the employee may prefer, in 4836 months, or as the employee may prefer, in 4848 months, or as the employee may prefer, in 4860 months, or as the employee may prefer, in 4872 months, or as the employee may prefer, in 4884 months, or as the employee may prefer, in 4896 months, or as the employee may prefer, in 4908 months, or as the employee may prefer, in 4920 months, or as the employee may prefer, in 4932 months, or as the employee may prefer, in 4944 months, or as the employee may prefer, in 4956 months, or as the employee may prefer, in 4968 months, or as the employee may prefer, in 4980 months, or as the employee may prefer, in 4992 months, or as the employee may prefer, in 5004 months, or as the employee may prefer, in 5016 months, or as the employee may prefer, in 5028 months, or as the employee may prefer, in 5040 months, or as the employee may prefer, in 5052 months, or as the employee may prefer, in 5064 months, or as the employee may prefer, in 5076 months, or as the employee may prefer, in 5088 months, or as the employee may prefer, in 5100 months, or as the employee may prefer, in 5112 months, or as the employee may prefer, in 5124 months, or as the employee may prefer, in 5136 months, or as the employee may prefer, in 5148 months, or as the employee may prefer, in 5160 months, or as the employee may prefer, in 5172 months, or as the employee may prefer, in 5184 months, or as the employee may prefer, in 5196 months, or as the employee may prefer, in 5208 months, or as the employee may prefer, in 5220 months, or as the employee may prefer, in 5232 months, or as the employee may prefer, in 5244 months, or as the employee may prefer, in 5256 months, or as the employee may prefer, in 5268 months, or as the employee may prefer, in 5280 months, or as the employee may prefer, in 5292 months, or as the employee may prefer, in 5304 months, or as the employee may prefer, in 5316 months, or as the employee may prefer, in 5328 months, or as the employee may prefer, in 5340 months, or as the employee may prefer, in 5352 months, or as the employee may prefer, in 5364 months, or as the employee may prefer, in 5376 months, or as the employee may prefer, in 5388 months, or as the employee may prefer, in 5400 months, or as the employee may prefer, in 5412 months, or as the employee may prefer, in 5424 months, or as the employee may prefer, in 5436 months, or as the employee may prefer, in 5448 months, or as the employee may prefer, in 5460 months, or as the employee may prefer, in 5472 months, or as the employee may prefer, in 5484 months, or as the employee may prefer, in 5496 months, or as the employee may prefer, in 5508 months, or as the employee may prefer, in 5520 months, or as the employee may prefer, in 5532 months, or as the employee may prefer, in 5544 months, or as the employee may prefer, in 5556 months, or as the employee may prefer, in 5568 months, or as the employee may prefer, in 5580 months, or as the employee may prefer, in 5592 months, or as the employee may prefer, in 5604 months, or as the employee may prefer, in 5616 months, or as the employee may prefer, in 5628 months, or as the employee may prefer, in 5640 months, or as the employee may prefer, in 5652 months, or as the employee may prefer, in 5664 months, or as the employee may prefer, in 5676 months, or as the employee may prefer, in 5688 months, or as the employee may prefer, in 5700 months, or as the employee may prefer, in 5712 months, or as the employee may prefer, in 5724 months, or as the employee may prefer, in 5736 months, or as the employee may prefer, in 5748 months, or as the employee may prefer, in 5760 months, or as the employee may prefer, in 5772 months, or as the employee may prefer, in 5784 months, or as the employee may prefer, in 5796 months, or as the employee may prefer, in 5808 months, or as the employee may prefer, in 5820 months, or as the employee may prefer, in 5832 months, or as the employee may prefer, in 5844 months, or as the employee may prefer, in 5856 months, or as the employee may prefer, in 5868 months, or as the employee may prefer, in 5880 months, or as the employee may prefer, in 5892 months, or as the employee may prefer, in 5904 months, or as the employee may prefer, in 5916 months, or as the employee may prefer, in 5928 months, or as the employee may prefer, in 5940 months, or as the employee may prefer, in 5952 months, or as the employee may prefer, in 5964 months, or as the employee may prefer, in 5976 months, or as the employee may prefer, in 5988 months, or as the employee may prefer, in 6000 months, or as the employee may prefer, in 6012 months, or as the employee may prefer, in 6024 months, or as the employee may prefer, in 6036 months, or as the employee may prefer, in 6048 months, or as the employee may prefer, in 6060 months, or as the employee may prefer, in 6072 months, or as the employee may prefer, in 6084 months, or as the employee may prefer, in 6096 months, or as the employee may prefer, in 6108 months, or as the employee may prefer, in 6120 months, or as the employee may prefer, in 6132 months, or as the employee may prefer, in 6144 months, or as the employee may prefer, in 6156 months, or as the employee may prefer, in 6168 months, or as the employee may prefer, in 6180 months, or as the employee may prefer, in 6192 months, or as the employee may prefer, in 6204 months, or as the employee may prefer, in 6216 months, or as the employee may prefer, in 6228 months, or as the employee may prefer, in 6240 months, or as the employee may prefer, in 6252 months, or as the employee may prefer, in 6264 months, or as the employee may prefer, in 6276 months, or as the employee may prefer, in 6288 months, or as the employee may prefer, in 6300 months, or as the employee may prefer, in 6312 months, or as the employee may prefer, in 6324 months, or as the employee may prefer, in 6336 months, or as the employee may prefer, in 6348 months, or as the employee may prefer, in 6360 months, or as the employee may prefer, in 6372 months, or as the employee may prefer, in 6384 months, or as the employee may prefer, in 6396 months, or as the employee may prefer, in 6408 months, or as the employee may prefer, in 6420 months, or as the employee may prefer, in 6432 months, or as the employee may prefer, in 6444 months, or as the employee may prefer, in 6456 months, or as the employee may prefer, in 6468 months, or as the employee may prefer, in 6480 months, or as the employee may prefer, in 6492 months, or as the employee may prefer, in 6504 months, or as the employee may prefer, in 6516 months, or as the employee may prefer, in 6528 months, or as the employee may prefer, in 6540 months, or as the employee may prefer, in 6552 months, or as the employee may prefer, in 6564 months, or as the employee may prefer, in 6576 months, or as the employee may prefer, in 6588 months, or as the employee may prefer, in 6600 months, or as the employee may prefer, in 6612 months, or as the employee may prefer, in 6624 months, or as the employee may prefer, in 6636 months, or as the employee may prefer, in 6648 months, or as the employee may prefer, in 6660 months, or as the employee may prefer, in 6672 months, or as the employee may prefer, in 6684 months, or as the employee may prefer, in 6696 months, or as the employee may prefer, in 6708 months, or as the employee may prefer, in 6720 months, or as the employee may prefer, in 6732 months, or as the employee may prefer, in 6744 months, or as the employee may prefer, in 6756 months, or as the employee may prefer, in 6768 months, or as the employee may prefer, in 67

THE WEEKLY ARENA

(MONT) MONTHLY PUBLICATION... \$1.25

Subscription Notice... \$1.25

Published as second-class matter... 1919.

Arch C. Johnson, who is a candidate for the office of county commissioner...

Arch C. Johnson, who is a candidate for the office of county commissioner...

Arch C. Johnson, who is a candidate for the office of county commissioner...

Arch C. Johnson, who is a candidate for the office of county commissioner...

Arch C. Johnson, who is a candidate for the office of county commissioner...

Arch C. Johnson, who is a candidate for the office of county commissioner...

Arch C. Johnson, who is a candidate for the office of county commissioner...

Arch C. Johnson, who is a candidate for the office of county commissioner...

Arch C. Johnson, who is a candidate for the office of county commissioner...

Arch C. Johnson, who is a candidate for the office of county commissioner...

Arch C. Johnson, who is a candidate for the office of county commissioner...

Arch C. Johnson, who is a candidate for the office of county commissioner...

Arch C. Johnson, who is a candidate for the office of county commissioner...

Arch C. Johnson, who is a candidate for the office of county commissioner...

Arch C. Johnson, who is a candidate for the office of county commissioner...

Arch C. Johnson, who is a candidate for the office of county commissioner...

Arch C. Johnson, who is a candidate for the office of county commissioner...

Arch C. Johnson, who is a candidate for the office of county commissioner...

Arch C. Johnson, who is a candidate for the office of county commissioner...

Arch C. Johnson, who is a candidate for the office of county commissioner...

Arch C. Johnson, who is a candidate for the office of county commissioner...

Arch C. Johnson, who is a candidate for the office of county commissioner...

Arch C. Johnson, who is a candidate for the office of county commissioner...

Arch C. Johnson, who is a candidate for the office of county commissioner...

Arch C. Johnson, who is a candidate for the office of county commissioner...

CENTENARY OF THE CIGAR

Recalling Events of the Week Were First Made in France Just One Hundred Years Ago.

It is just 100 years ago since the cigar was first made in France and introduced into the United States...

The smoking effects of the Count de Montebello's cigars were observed in high places...

SHOULD WORK FOR A HOME

That is Probably the Reason Why a Hotel is Always a Strange to Us.

If I were confronted with the alternative of adhering to a course of home through leisure and no work or through work and no leisure, I should choose the second...

Baller's Yarn. A number of blubber hunters were together the other day spinning yarn, when one of them in the crowd...

Some Ages of Trees. Observations and records as to the general age of trees here show that the pine tree attains 100 years as a maximum length of life...

Vassar, Daisy Chalm. The Vassar students do not like the proposition that is given to the "Daisy Chalm."

Hold the Longer Needed. Twenty-year-old Elmer wanted to get into the playroom, but the gate (which he had broken) was locked...

Arch C. Johnson, who is a candidate for the office of county commissioner...

Arch C. Johnson, who is a candidate for the office of county commissioner...

Arch C. Johnson, who is a candidate for the office of county commissioner...

Arch C. Johnson, who is a candidate for the office of county commissioner...

Arch C. Johnson, who is a candidate for the office of county commissioner...

Arch C. Johnson, who is a candidate for the office of county commissioner...

Arch C. Johnson, who is a candidate for the office of county commissioner...

Arch C. Johnson, who is a candidate for the office of county commissioner...

Arch C. Johnson, who is a candidate for the office of county commissioner...

SNAPSHOTS TAKEN AT VERA CRUZ

FIRING AT THE VERA CRUZ SNIPERS



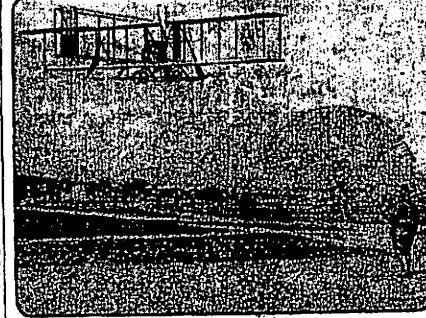
Some of the first detachment of Jackies who landed at Vera Cruz found a natural breastwork in the shape of a huge boiler.

TAKING THE STARS AND STRIPES ASHORE



Scene at the Vera Cruz docks as the Jackies and marines from the battleship Florida scampers ashore, bearing the American flag.

NAVAL AVIATORS SCOUT AROUND VERA CRUZ



Down at Vera Cruz the aviators of the navy have been giving the first demonstration of their value in connection with military operations.

MEXICAN CROWDS FOLLOW OUR MARINES



As it is to be seen in the photograph, the American marines aroused great interest among the people of Vera Cruz, and crowd followed them as they made their way to the posts assigned them.

New York. In the most popular city in the country, more popular songs are published in New York than in all other cities combined...

THE SOUL OF THE HOUSE

By JANE COWDEN.

"You'll come what else there is in the house if only it has a big open fireplace," said Perdita.

"I'll take it," declared Perdita. "Then when the frost advances and we'll do as Kate advises, sit us up, the angle bright and ever let the fano room."

"How it smokes!" said Perdita presently. "That's because the fireplace has been used for such a long time."

"Good evening," said the voice of some one hidden in the smok. "Having some trouble with your fireplace?"

"There's a certain kind of damper that you can buy," another smoky clogged voice was heard to say.

"Loose! Loose! Freed a Negro." "When a customer dear with her two-eyes and her hair came at the door...

Practical Fashions

LADY'S WAIST.



This is a most unusual model. It is cut with body and sleeves in one and with the closing in the center of the back.

Form with fields for NAME, TOWN, STREET AND NO., STATE.

Practical Fashion

BOY'S SUIT.



In this design we have one of the dainty suits for little boys. The blouse comes down the front and has a large sailor collar at the neck.

Form with fields for NAME, TOWN, STREET AND NO., STATE.

Only Rights Left.

Michael J. Gibbons, junior vice-commissioner of the Medal of Honor Legion (membership thereof is a proof that the man received a medal for some distinguished gallantry in action) was talking at Portsmouth about a Fourth of July parade that had been broken up by the prosecution of automobiles.

"What is the world coming to?" said Mr. Gibbons. "Say, tell me—step out of the car, get an extra seat from a busy street dodged an electric trolley car, escaped a 60 horse power roadster, equipped out of the way of a trolley car, escaped a taxicab by the skin of his teeth, and was just setting his foot on the opposite sidewalk when a sign of rain when a descending shower-bore down on him."

"When a pedestrian no right these days" cried the poor fellow, dodging the way and that.

"It'll be damned if I'll work the (that) everybody's machine."

Vertical text on the far right edge of the page, including notices and dates.

Read The Weekly Arena

And keep posted on all the live town and county news.

\$1.25 per year

Is all that is asked for this great family journal.

SUBSCRIBE NOW!

We want your CREAM

and we will pay the highest Cash Price for it delivered at our buying station at Almont, North Dakota.

Bridgman-Russell

Computus has always been one of the few companies that live up to and do business strictly in harmony with the most advanced sanitary laws of the Dairy department of Minnesota and North Dakota.

O. C. Ellingson, Agt

WE repair everything.

Watches, eyeglasses, rings, chains, jewelry of all sorts. And what we repair we repair RIGHT.

No tedious waiting, either—unless something unforeseen arises.

And no charges higher than they ought to be.

So that there are no disappointments for you anywhere by our way of doing business. Prove this some day by letting us do a repair job for you.

C. G. CONYNE, Jeweler and Optician, Mandan, N. D.

Insurance

Farm Loans

Real Estate

Collectors

E. E. Templeton, ALMONT, NORTH DAKOTA

Dr. O. T. Benson Physician & Surgeon

Office hours 10:15 and 1:15 Glen Ullin.

PERSONAL AND LOCAL NEWS

About Yourself and Others in this Community and Elsewhere

Friday, May 22nd, 1914.

Peter Nelson was transacting business in New Salem, Saturday.

Chas. Cunningham of Judson spent Sunday here, visiting at the Cinnermann home.

Editor Hall of the Glen Ullin News was a business visitor in Almont, Wednesday.

John Tommerman and Niel Gillis motored over to Fisher, last Sunday, to spend the day.

CREAM! CREAM! cream!—We are paying the highest market prices. C. A. Knutsen & Co.

STRAWED—Red veering hull, all face partly white. Findest dense notify, Joe Peterson. 21.

Mr. and Mrs. E. W. Hyde and family motored over to New Salem, Tuesday, returning in the evening.

Miss Anna Wang and her mother came down from Hebron, Tuesday, and departed for their farm south of here, Wednesday.

Mr. and Mrs. R. H. Fraser left, Wednesday morning, on No. 4 for Milwaukee, Wisconsin, where they will visit for some time.

The Almont school closed a very successful term of school here, Friday. Mrs. G. H. Anderson and Carrie Jacobson were the teachers for the first term.

We will appreciate all the news our readers send to us. We cannot get all the news there is, although we do our best to give you an up-to-date weekly paper in all respects.

Mr. Selmer M. Hout will preach at the Temple school house every Sunday afternoon at 3 o'clock and at Almont at 8 o'clock. Subject next Sunday, "The Mistakes Made of the Reconstruction."

Prof. G. G. Lane left Tuesday at St. Paul, where he will visit friends. Mr. Lane has just closed a very successful term of school in the Valley Forge district. He has accepted the principalship at Judon for the coming year.

SCHE VIEWS FROM ABROAD

British Paper Lauds U. S. While Berlin Post Criticizes It

London, Eng., April 22.—According to The Standard the large commercial interests in Great Britain believe that the American action will tend to improve the prospects of British financial and commercial interests in Mexico, because it provides hope of eventual peace and resumption of trade.

The Standard learns that the action of the United States government has the full approval of the British government and that any international complications are extremely unlikely.

Hitler Attack on America. Berlin.—The Post, this morning closes a bitter anti-American editorial as follows: "Hitler has no reason to desire an American victory. The American colonies would, however, grow still more stagnant and become more dangerous for us economically than if already so."

Income to Boost State. Los Angeles, Ia., April 22.—Plans for a "Greater Iowa Association," the object of which will be to boost the resources of the state, were perfected at a meeting of Iowa business men at the state house in a movement also was started to raise funds for the erection of a \$125,000 Iowa building at the Panama exposition.

Would Demolish Bridges, Corps. St. Louis, Mo., April 22.—Albert

Advertise in the Arena. It pays.

D. W. Forsblad was visiting friends in Bismarck, Saturday.

We have some potatoes. G. F. Hensleigh. Adv.

Theo. Larson was in Bismarck, Tuesday and Wednesday, on business.

Chas. Kellogg and Oliver Leverson were calling on friends here, Saturday.

The Arena would like to have a few more correspondents from the country districts.

Bring in your cream to C. A. Knutsen & Co., and get the highest market price. Adv.

Edward Headly, who has been visiting at the home of C. P. Hall, returned to Bismarck, Saturday.

If you care to get your money's worth for your CREAM, better sell it to C. A. Knutsen & Co.

CATTLE BOUGHT—I will buy cattle of any kind and pay best prices. J. N. Sharff. Adv. 41

Andrew Knutson has installed a big pump and gas engine on his farm south of town, for irrigating.

Mrs. M. T. McNeil spent Sunday and Monday visiting with Mr. McNeil at Bismarck where he is engaged on the Tribune.

H. J. Carrier, who has been relieving agent Forsblad, went to Helfield, Monday, where he will take charge of that station.

For sale—50,000 strawberry plants at \$1.00 per hundred, delivered. Cash with order. C. P. Hall, Almont, N. D. Advt

B. C. Bird was an Almont visitor the fore part of the week. He is a candidate for Sheriff and all his friends here would like to see him elected to office.

Mrs. G. H. Anderson, and the Misses Carrie Jacobson, Christin Nelson, Amanda Nelson and Grace Jacobson spent Saturday at Rose Bud, making the trip by auto.

Bond Lambert, millionaire aviator, left for the army and navy departments at Washington and asked the secretary of these departments for command of the United States aviation reserve corps.

Our National Capital. The capital of the United States has been located at different times at the following places: At Philadelphia, from September 8, 1774, to December, 1778; at Lancaster, Pa., September 21, 1777; York Pa., September 26, 1777; Philadelphia, March 4, 1778, to September 26, 1777; Lancaster, Pa., September 21, 1777; York Pa., September 26, 1777; Philadelphia, July 26, 1778, to June 20, 1783; Princeton, N. J., June 20, 1783, to November 20, 1783; Annapolis, Md., November 21, 1783, to November 21, 1784; Trenton, N. J., from November 23, 1784, to January, 1785; New York City, November 11, 1785, to 1790. Then the seat of government was removed to Philadelphia, where it remained until 1800, since which time it has been in Washington.

Largest Dredging Machine Made Ready. New York, April 22.—Although orders have been received directing the dredging of Texas and New York to sail for Mexican waters, the two largest war vessels in the world have been kept in a state of readiness at the Brooklyn yard. They brought ammunition down the Hudson year ago and it was started on toward New York, which went into operation only last week. This work was completed today. The Texas already has her ammunition.

POLITICAL ANNOUNCEMENTS

PAID ADVERTISING

For County Commissioner.

As my regular county commission expires this district, and during that time every effort has been made to preserve the interests of the taxpayers of the entire county. Also during that time I have had the welfare of the people of this district ever before me and have worked untiringly to advance its interests. In announcing my candidacy for the republican nomination for the above office subject to the votes of the people at the primary election on June 24th, I promise if nominated and elected, to work unceasingly for the interest and welfare of the people of this district and county.

Therese Feldt, Almont, N. D. 3-24-14

For State's Attorney.



I hereby announce myself as a republican candidate for State's Attorney three (3) years experience as a lawyer. Your votes earnestly solicited. B. W. Shaw. Political advertisement 4-4-14.

For County Auditor.

I hereby announce myself as a candidate for County Auditor of Morton county on the republican ticket, at the



primary election to be held June 24th, 1914. Your support is solicited and will be appreciated. Lee Nichols. 3-14-14.

For Clerk of Court.

I hereby announce my candidacy for re-election to the office of Clerk of Court for Morton county, subject to the decision of the Republican voters of Morton county at the primaries to be held on June 24th, 1914. And I further wish it stated at this time that this will be the last time I shall seek such office. NO MORK. [Political advertising.] 4-4-14-12.



William Lambert, Present Assistant State Auditor, Republican Candidate for STATE'S ATTORNEY of Morton County.

For State's Attorney.

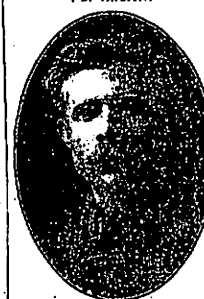
I hereby announce my candidacy for the nomination on the republican ticket for the office of State's Attorney of Morton county at the primary election to be held on the 24th day of June, 1914. Your support is solicited and will be appreciated. 3-24-14. L. H. Conolly.



For States Attorney.

I hereby announce myself a candidate for the office of States Attorney for Morton county on the republican ticket, subject to the wish of the voters in its support at the primaries June 24. Your support and votes will be fully appreciated. L. N. Steen, Mandan, N. D. 3-14-14

For Sheriff.



I take this means of announcing to the public that I am a candidate for the republican nomination for sheriff of Morton county. If nominated and elected I promise that my entire time will be devoted to the duties of the office. earnestly seek your support. B. C. Bird, Almont, N. D. 3-24-14.

For Register of Deeds.

I hereby announce myself a candidate for the nomination for the office of register of deeds for Morton county. I am a republican and solicit the votes of the republicans at the primary election to be held June 24th, 1914. My record in office is open to your inspection and I await your decision at the primaries. 3-21-14. John T. Kogin.

Superintendent of Schools.

If my services have met with the approval of the county, I am asking that if the coming election I may be chosen to succeed myself in my present position. Very respectfully, W. P. Levin. [Political advertising.] 4-4-14-12.

For County Judge.

I hereby announce my candidacy for the nomination on the republican ticket for the office of County Judge of Morton county at the primary election to be held June 24th, 1914, and would appreciate your kindly consideration and vote. George J. London, Advt. Hebron, N. D. 4-18-14.

Advertisement for GEORGE F. FORD, CLERK OF COURT, Republican Party.

Announcement.

FOR COUNTY JUDGE. I hereby announce myself as a candidate for the republican nomination for the office of County Judge. I earnestly solicit the support of the voters of Morton county, and if elected will devote my untiring time and attention to the office. 3-21-14 Jacob C. Johnson.



Announcement

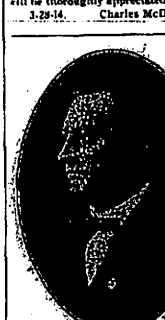
Subject to the wishes of the republican voters the primaries in Morton county, June 24, I respectfully ask the nomination for Clerk of District Court. Yours truly, OLIVER LEVERSON, New Salem, N. D.

For County Treasurer.

I hereby announce myself a candidate for reelection to the office of County Treasurer, subject to the approval of the republican voters at the primaries to be held on June 24th, 1914. I am serving as first term as treasurer and have given attention and will continue to do so. I respectfully ask you to vote for me. W. C. SANDERS. [Political advertising.] 4-4-14-12

For Sheriff.

I hereby announce myself a candidate on the republican ticket, for the nomination for sheriff of this county. I am now serving a term as sheriff and will go before the people at the primaries on June 24th, for their approval of my work as an official. Any approval given me will be thoroughly appreciated. 3-28-14. Charles McDonald.



L. A. SIMPSON

Candidate for Congress. Third District. Solicits your support and vote at the June Primaries.

R. R. Time Table

Table with columns for EAST BOUND and WEST BOUND, listing train numbers and times.